

OCEC/RACES SIGNALS

For the support of County Government during emergencies



Oswego County Emergency
Communicators/RACES
200 North 2nd Street
Fulton, NY 13069

Oswego County Repeaters

147.150 mHz PL not req'd
146.850 mHz PL not req'd
442.350 mHz 103.5 PL

Other repeaters of interest

146.625 mHz PL 103.5 Syracuse
147.345 mHz No PL Phoenix

Packet FlexDigi User Ports

EOC Fulotn 145.090 mHz K2QQY
Scriba 145.690 mHz KA2AON
Hannibal 145.770 mHzK1YHR

NETS

OCEC/RACES The 1st and 3rd Sunday
of the month at 2000 Hrs. 147.150 mHz

NYS RACES Net Every Sunday Morn-
ing at 0900 local on 3993.50 kHz

WEB SITES

OCEC/RACES
www.oswegoraces.org

Fulton Amateur Radio Club
www.fultonhamradioclub.org

Go to our web page for more links to
interesting places.

*A monthly meeting is held in the
lower level of the County Building
on Route 481 North, Fulton,
across from Mimi's restaurant.
Access is through the west door
until the meeting starts. Door is
secured after that. Use the after
hours button if late. Someone will
come up and let you in. Meeting
sign in is at 1850 hours local.*

Meeting Agenda for Wednesday, April 16

**1850 - 1900 Sign In
1900 - 2000 Member Appreciation Night. Featured
speaker Pat Egan, Director
EMO.**

**2000 - 2015 Report on Field
Day prep.
2016 - 2040 Revisions to net
operation
2041 - 2100 General ques-
tion and answer**

OFFICERS

John K2QQY Radio Officer
Keith, WB2NVY ARO Admin
Jim N2MGU ARO Comms
Mark KC2JNI ARO Logistics
Bob WA2AFF ARO Ops & Plan,
Tom W2TQF ARO ARRL EC
John N2MKH Unit Ldr Packet
Steve KC2QXE Unit Ldr IT
Brien KA2AON Unit Ldr Skywarn

INSIDE

Page 2 Past, Present, Future
Page 3 The Commercial Page
Page 4 Technical Subjects
Page 5 Ultimate Portable Rig

Since Last Month

We received the software and cable to program our FT-78000 radios. As many of you saw on the recent distribution of the frequency list there would be some pretty good manual programming time required to get all of them in to the radio. And there are four other FT-7800's to do. We also have the software for the TMD700 and the TMV-7.

We are revising our check in routine for nets. We tried the give your call sign and then repeat it phonetically. There did not seem to be an advantage to do both, so we are asking that only phonetics be used for the initial check in and then just your regular saying of your call sign after that. This will reduce the time sometimes needed to clarify an unclear call sign.

The Thursday night packet meeting is changing to Monday nights at 1930. We will be posting the meeting node for the net on the BBS at K2QQY. Change starts April 14.

Current Events

The recognition for continued support of emergency communications and the effort put forth to have a reliable and responsive program will be recognized at our general meeting, Wednesday. It is very difficult to single out one person for this recognition as we are fortunate to have a very good team that contributes to the program. However, the nominating committee has taken into account all of the past years activities and through careful selection (not counting the dinero contributed) has arrived at a nomination that will be announced at the meeting. All attending are asked to slicker up and be prepared to have your picture taken.

A revised date for the REPP drill in August has been given It is now Wednesday, August 13. Please adjust your calendar.

Future Events

May 21 Radiological Training

June 28 and 29 Can you hear me now? Field Day exercise

August 13 REPP Drill New York State Observed

November 6 EOC Activation

The Commercial Page



TEN TEC OMNI SIX MODEL 563 WITH FACTORY INSTALLED OPTION 3 WHICH UPGRADES OMNI SIX TO OMNI SIX PLUS.

FOUR INSTALLED IF CW FILTERS

TEN TEC OMNI SIX MATCHING POWER SUPPLY MODEL 962

TEN TEC OMNI SIX MATCHING ANTENNA TUNER MODEL 238

TEN TEC DESK MICROPHONE MODEL 705

TEN TEC TELEGRAPH PADDLES MODEL 607

ENTIRE STATION LIKE NEW - NO SCRATCHES OR WEAR SPOTS. ONLY SMALL ISSUE IS FOAM ON END OF MICROPHONE MISSING BUT THE MIKE WORKS WELL.

\$1400.00 Contact Dave, WD4EKB at 593-1802

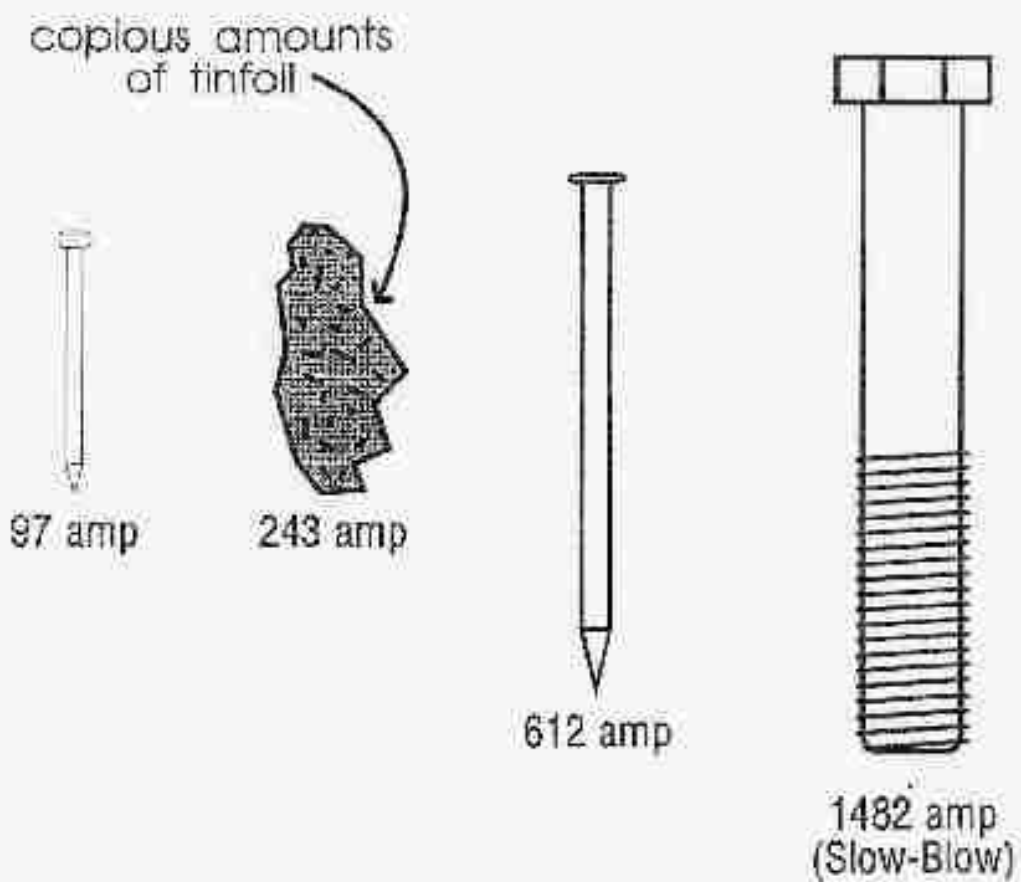
Free: I'm looking to unload this honkin beast of a desk that served as my ham shack desk the past few years. It's a heavy old, maybe antique wood desk with wood drawer dividers.

Would make a better workbench than office desk. It's 58Wx32Dx30H. I also have a piece of plexiglas that covers most of the top. It has a few drill holes in the top where I mounted my antenna switch, articulated desk lamp, and code key.



Technical Help

Guide to Fuse Replacement



Don't try this at home!!

The Radio Hat

Radio-Electronics, June 1949

http://www.swtpe.com/mholley/RadioElectronics/Jun1949/RE_Jun1949.htm



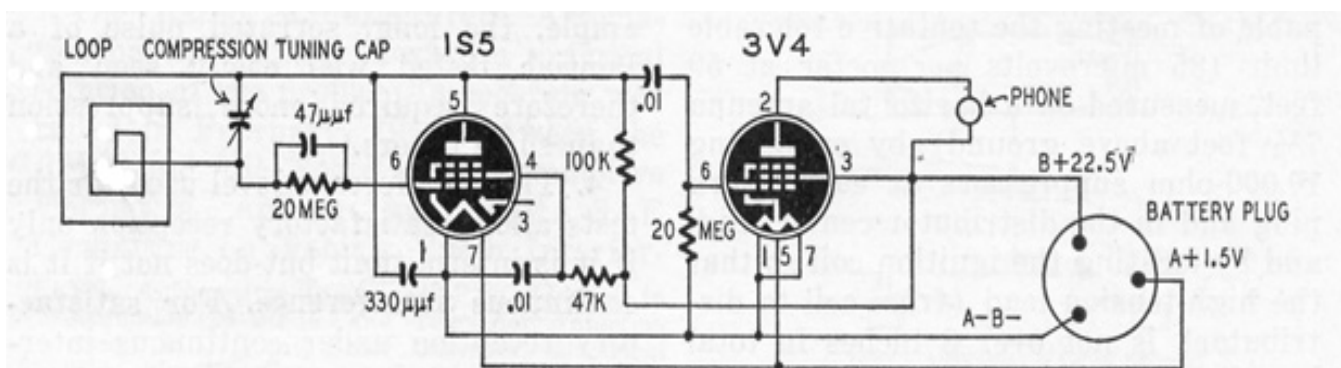
Copyright © 1949 Poptronix, Inc.; used by permission.
(The copyright was not renewed and this issue is in the public domain.)

The young lady on the cover is the actress Hope Lange.

Radio Hat

One of the most useful and eye-catching radio novelties in a long time is the Radio Hat, a new type of personal receiver manufactured by the American Merri-Lei Corporation of Brooklyn, N. Y. It is a sensitive little two-tube set built into a tropical-type helmet with the tubes projecting from the front like two small horns.

Its tuning control is a small, streamlined bar knob mounted between the tubes. The antenna (and tuning inductor) is a 5-inch loop, 1/2 inch wide, mounted vertically on the rear of the crown. It fits into a socket that permits rotation through 90 degrees for directional effects. A single headphone is built into the inside of the hat just over one ear.



The interesting detector circuit apparently adds considerably to the receiver's sensitivity.