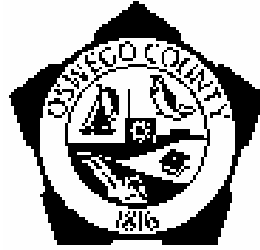


Oswego County Emergency Communicators/RACES

RACES (Radio Amateur Civil Emergency Service)



SERVICE PLAN FOR THE SUPPORT OF COUNTY GOVERNMENT DURING EMERGENCIES

DEDICATION

This manual is dedicated to those Amateur Radio Operators and members of the Oswego County Emergency Communicators/Radio Amateur Civil Emergency Service organized to establish radio communications with the Emergency Management Jurisdiction in Oswego County and to the District and/or State Control Centers. These Amateur Radio Operators have volunteered their time, energy, knowledge and ability as communicators to serve in time of public safety threats, emergencies, disasters and wherever Emergency Management needs communications.

Table of Contents

DEDICATION1

INTRODUCTION.....1

PREFACE2

PURPOSE.....2

 1.0 AREAS COVERED3

 2.0 JURISDICTIONS AND AGENCIES COVERED4

 3.0 RADIO OFFICER AND STAFF ORGANIZATION4

 4.0 PARTICIPANTS5

 5.0 RESOURCES5

 6.0 NETWORKS5

 7.0 EQUIPMENT RESOURCES.....6

 8.0 IMPLEMENTATION PROCEDURES.....6

 9.0 TESTS.....6

 10.0 REVIEW7

ACTIVATING OCEC/RACES.....8

CONTACT PERSONNEL.....9

Oswego County Emergency Communicators/RACES

INTRODUCTION

The Oswego County Emergency Communicators (OCEC)/RACES is a reserve that provides the government of Oswego County with a variety of professional unpaid volunteer skills, including administrative, technical and operational, for emergency tactical, administrative and logistical communications, such as with its agencies, cities within the County, neighboring governments and the State Emergency Management Office.

The organization of OCEC/RACES includes the RACES (Radio Amateur Civil Emergency Service) and the National Weather Services Skywarn program. Its mission is to operate and maintain Amateur, Public Safety and other communications systems and to perform unique, accurate and efficient communications services to assist government officials in the protection of life and property. The OCEC/RACES coordinates mutual aid, RACES, or other equivalent government Amateur Radio resources, and promotes the effective management and utilization of the Amateur Radio operators and other Federal Communications Commission (FCC) licensees, such as Civil Air Patrol (CAP) and others in support of civil defense and disaster response recovery.

The OCEC/RACES is administered under the guidance of Oswego County Emergency Management Director.

The resources of this service are an essential staff resource intended to augment agency and Public Safety communications. No declaration of an emergency is required. However, the use of the FCC Amateur Radio service frequencies is limited to training and emergency communications.

In May 1951, New York State Radio Officer, Vincent T. Kenny, W2BGO, spearheaded the establishment of the Northeast United States Civil Defense Amateur Radio Alliance (USCDARA). In 1955 this group promoted the adoption of a Standard Operating Procedure, channelization of the RACES frequency allocations, uniform message forms, etc.

The Federal Communications Commission established the Radio Amateur Civil Emergency Service (RACES) effective August 15, 1952 to meet the needs of the Federal Civil Defense Administration (FCDA), state and local governments. If ever again there is need to suspend Amateur Radio operation because of a national crisis, RACES will remain on the air serving the needs of the government.

Included within the OCEC/RACES is an area for participation by non-hams. These may include, but is not limited to, Citizen Band REACT organizations, Civil Air Patrol, Boy Scout Explorers, business service groups and civilian volunteers for help in clerical and technical areas. Families are encouraged to participate.

PREFACE

This issue of the OCEC/RACES service plan is the ninth revision since the manual was first authorized by then Radio Officer Tom Adams, K2DUR, and County Deputy Director Shirley Ludington, WA2SOO.

Since the inception of the first manual, many changes in communications techniques have taken place, both in equipment and procedures. The manual has spanned the days of AM and tubes to Packet and integrated circuits.

PURPOSE

This service plan is intended to provide coordinated operation between the County of Oswego government officials and the OCEC/RACES during times when there are threats to the safety of life and/or property. Maximum benefits can be obtained only through careful planning which identifies the organizations, agencies, individuals, and assigns a definitive role to each. This plan enables agencies and organizations having emergency responsibilities to include the RACES in local emergency plans and programs.

This service plan becomes official for the County of Oswego, New York when signed by the Director of the Oswego County Emergency Management Office and the Oswego County Radio Officer. Under this plan, the Director of the Emergency Management Office is empowered to request the use of available volunteer communications facilities and personnel. Acceptance of or participation in the plan shall not be deemed as a relinquishment of license control, and shall not be deemed to prohibit an amateur radio service licensee from exercising independent discretion and responsibility in any given situation under terms of its license.

RACES Authority. Part 97 Subpart A, Federal communications Commission Rules and Regulations.

1.0 AREAS COVERED

Oswego County faces a variety of threats, both natural and technological, for which it must be prepared to respond. A wide range of potential emergencies has to be considered by emergency services personnel - whether paid or unpaid. Any of these threats could occasion the requirement for qualified emergency communications to assist, supplement, augment or replace existing government facilities. Such threats include:

- Chemical and hazardous material spills and chemical releases that affect the population with both immediate and long-term health hazards.
- Dam failure from natural or man-made causes that can result in extensive damage and potential loss of life in areas that would be affected by the sudden surge of water and debris.
- Large scale transportation accidents that can occur from a variety of causes, including automobiles, buses, military and civil aircraft, trains and other means.
- Earthquakes are notorious natural hazards due to the geologic construction of the state. Earthquakes can cause extensive damage and interruption in public and private facilities, death and destruction to any jurisdiction.
- Severe storms, tornadoes, flash floods can lead to unusual disasters; as can slower rising but devastating floods along river basins and valleys. Icing and snow may be an additional hazard under certain conditions.
- Unusual incidents can arise out of terrorism, urban unrest or mass actions.
- Key economic and industrial centers, such as power generating facilities, could be targets for nuclear, conventional war or armed aggression that can spill over into other areas.

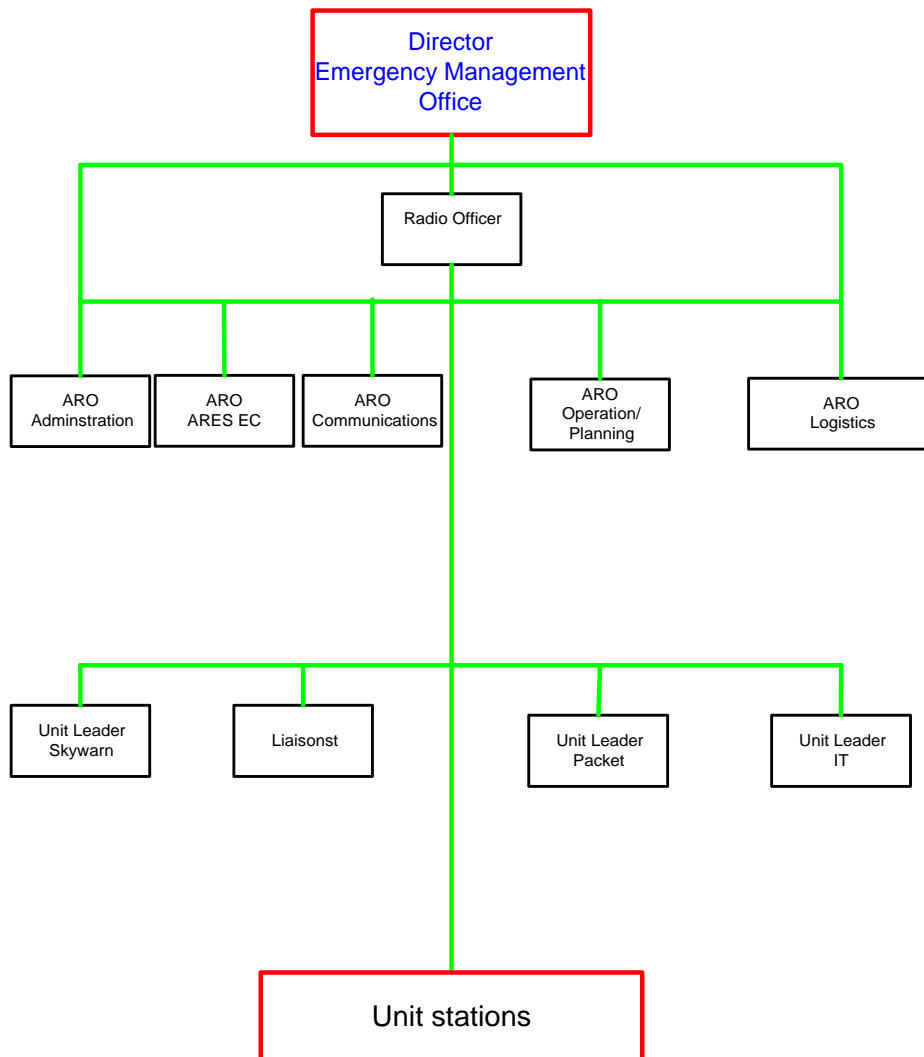
2.0 JURISDICTIONS AND AGENCIES COVERED

The jurisdictions covered by this plan are in the County of Oswego and its political subdivisions.

This plan provides for the interaction with emergency planning and response agencies.

3.0 RADIO OFFICER AND STAFF ORGANIZATION

The organizational diagram for the implementation and administration of these resources is shown below. Written operational procedures are issued as required and maintained in a separate Standard Operating Guidelines manual.



4.0 PARTICIPANTS

OCEC/RACES members are those participants who partake of the program in an on-going process. Amateur Radio operators and others enrolled under the provisions of this plan shall be registered as Civil Defense workers in accordance with Article 2/B, Section 29b. of the New York State Executive Law. Due to the sensitive nature of the activities of this level of participant, enrollment shall include, if necessary, authorization for verification of loyalty and reliability through appropriate local records checks, as by the Sheriff. These participants are expected to report to their assignments as quickly as possible when assigned. They shall be issued picture identification cards by the Emergency Management Office.

Oswego County Emergency Management has adopted the NIMS program as recommended by the U.S. Department of Homeland Security to be the guide in executing the life cycle of an emergency.

Since RACES is an integral element of the EMO's organization, and since they function in the Planning Section as Technical Specialists, all members are requested to complete training in ICS 100, Introduction to the Incident Command System and IS 700, the National Incident Management System either through local training seminars or through FEMA's Independent Study program.

Convergent volunteers are those participants who are brought in during an emergency and are listed on a separate roster maintained by the Radio Officer.

5.0 RESOURCES

These OCEC/RACES members are available to all government services/agencies as required, but are not assigned exclusively to any one service. Specific needs for emergency communications using communications volunteers in government service by departments or agencies of this jurisdiction are a part of this service; and are coordinated by the Director of the Emergency Management Office. Amateur radio operators are organized to provide communications services only, and are not required to serve in any other function except at their discretion.

6.0 NETWORKS

This service operates nets on any one of the following primary frequencies:

Receive 147.150 Mhz., Transmit 147.750 Mhz.

Receive 146.850 Mhz., Transmit 146.250 Mhz.

Receive 442.350 Mhz., Transmit 447.350 Mhz

Simplex on 145.56 Mhz.

Oswego County Emergency Communicators/RACES

In the event of an emergency, which necessitates invoking the President's war emergency powers, RACES will be governed by paragraph 97.407(b) of the FCC Rules and Regulations. Operations will be restricted to frequencies assigned and coordinated by the State Emergency Management Office.

7.0 EQUIPMENT RESOURCES

There are fixed, portable, and mobile stations under the provisions of this plan. The majority of the equipment is owned and operated by individual participants, while some is provided by the government. All networks will be available at the EOC and at alternate area EOC's.

8.0 IMPLEMENTATION PROCEDURES

Authentication: The form of authentication that will be used between the activating official and the RACES organization is personal identification or knowledge of the individuals involved.

Upon notification of an emergency condition or situation posing a threat to life and/or property, the Director of the Oswego County Emergency Office or a designated representative will contact the Radio Officer or designated alternate. *See Annexes A and B.*

Note: In order to speed personnel activation during emergency conditions or to provide other announcements, an authorized Oswego County Official may request that a public service announcement be made to assist activation of the RACES organization.

The following format will be used when contacting the RACES Radio Officer:

"This is (name and title) of the Oswego County Emergency Management Office. I request that RACES be activated for Oswego County because of (description of emergency situation)."

This service is a COMMUNICATION resource covered by the master mutual aid agreement for Oswego County and the State of New York. Requests from or to Oswego County for assistance (mutual aid) are to be directed to the Director of Oswego County Emergency Management or a designated representative.

In the event that assistance is offered by Amateur Radio operators not registered with Oswego County, they should contact the net control station for assignment and dispatch

At the cessation of the emergency, authorized officials shall contact the Radio Officer or designee to terminate the response. A role call will be initiated and all RACES members will acknowledge and confirm receipt of the termination message.

9.0 TESTS

Tests of the systems includes a twice a month on the air meeting and drills as required. The tone alert and pager system shall also be tested at the same time.

10.0 REVIEW

This plan, and its appendices, shall be reviewed for completeness, currency, and accuracy not later than three (3) years after the latest approval date. Revisions and corrections will be issued to all plan holders.

This has been reviewed and approved by the following authorities for use by the communicators and for inclusion in the Oswego County Comprehensive Emergency Management Plan.

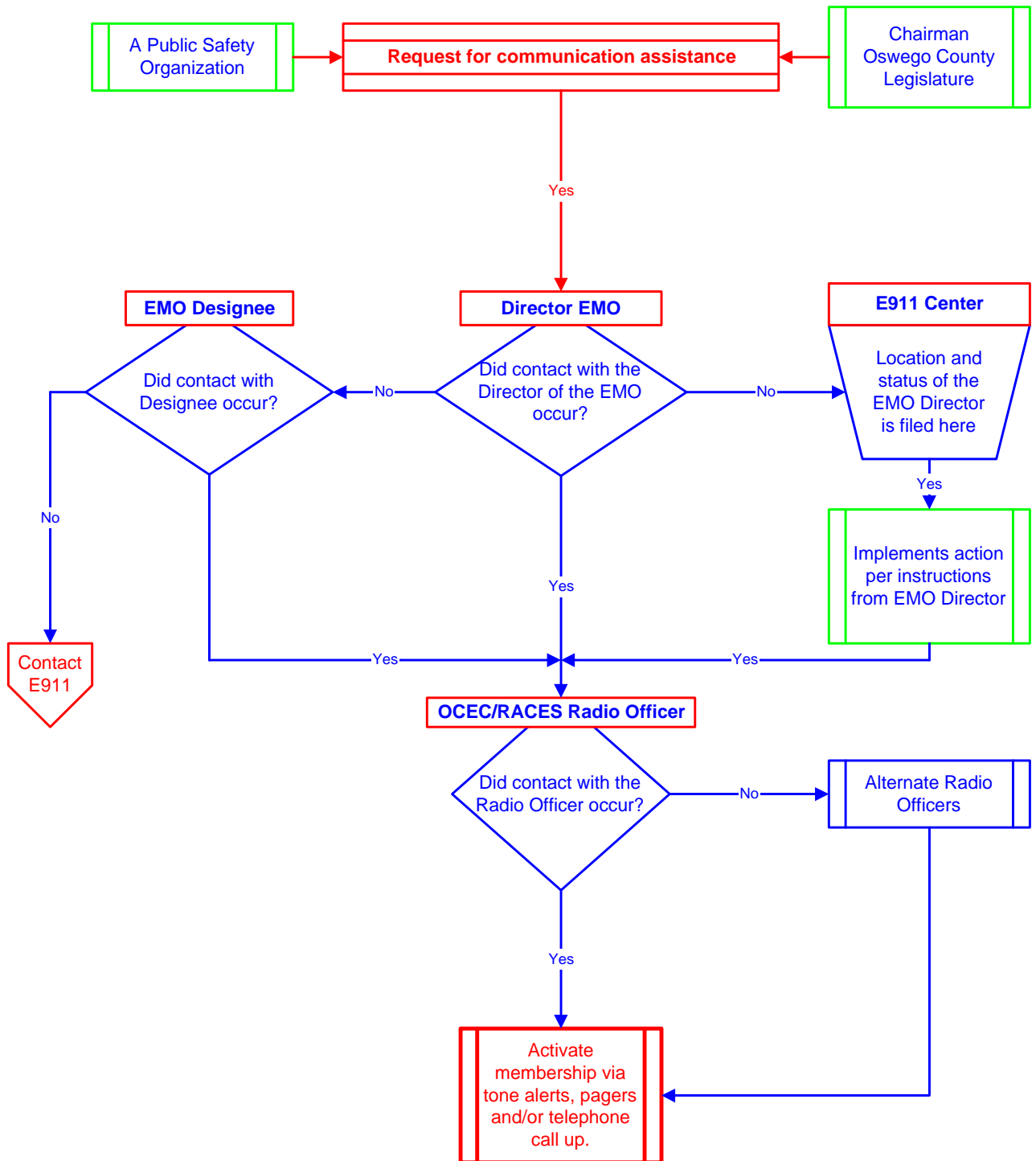
NAME

DATE

Director, Oswego County Emergency Management Office

Oswego County Emergency Communicators/RACES Radio Officer

ACTIVATING OCEC/RACES



Oswego County Emergency Communicators/RACES

CONTACT PERSONNEL

<u>TITLE</u>	<u>NAME</u>	<u>TELEPHONE</u>
Director EMO	Ms. Pat Egan	591-9150
EMO Designee	Ms. Terry Bennett	591-9157
E911 Center	Supervisor	349-8501
RACES Radio Officer	John Darling K2QQY	342-1723
RACES Alternate Radio Officer Ops & Planning.	Robert LaMay WA2AFF	343-2212
RACES Alternate Radio Officer Admin..	W. Keith Conroy WB2NVY	Work 857-2348 Home 638-3493
RACES Alternate Radio Officer Comms	Jim Otis N2MGU	Work 451-8000 Cell 450-3158
RACES Alternate Radio Officer ARES EC	Tom Cantine W2TQF	592-9305
RACES Alternate Radio Officer Logistics.	Mark Lewis KC2JNI	343-5816